

# Industrial Pressure Transmitter

Model: PT124B-211 (Micro Fused Technology )



## Description

The PT124B/G-211 pressure transducer adopt micro fused Technology which is we introduce we from MEAS (USA), it's a new price performance standard for low cost, high volume, commercial and industrial applications. This series is suitable for measurement of liquid or gas pressure, even for difficult media such as contaminated water, steam, and mildly. The transducer pressure cavity is machined from a solid piece of stainless steel. It's a leak-proof, all metal sealed system. No O-rings, welds or organics exposed to the pressure media. The durability is excellent corrosive fluids.



## Application

- ◆ Pumps and Compressors
- ◆ Hydraulic/Pneumatic Systems
- ◆ Automotive Test Systems
- ◆ Energy and Water Management
- ◆ Agriculture – Sprayers and Dusters
- ◆ Refrigeration – Freon and Ammonia Based
- ◆ General Pressure Measurements

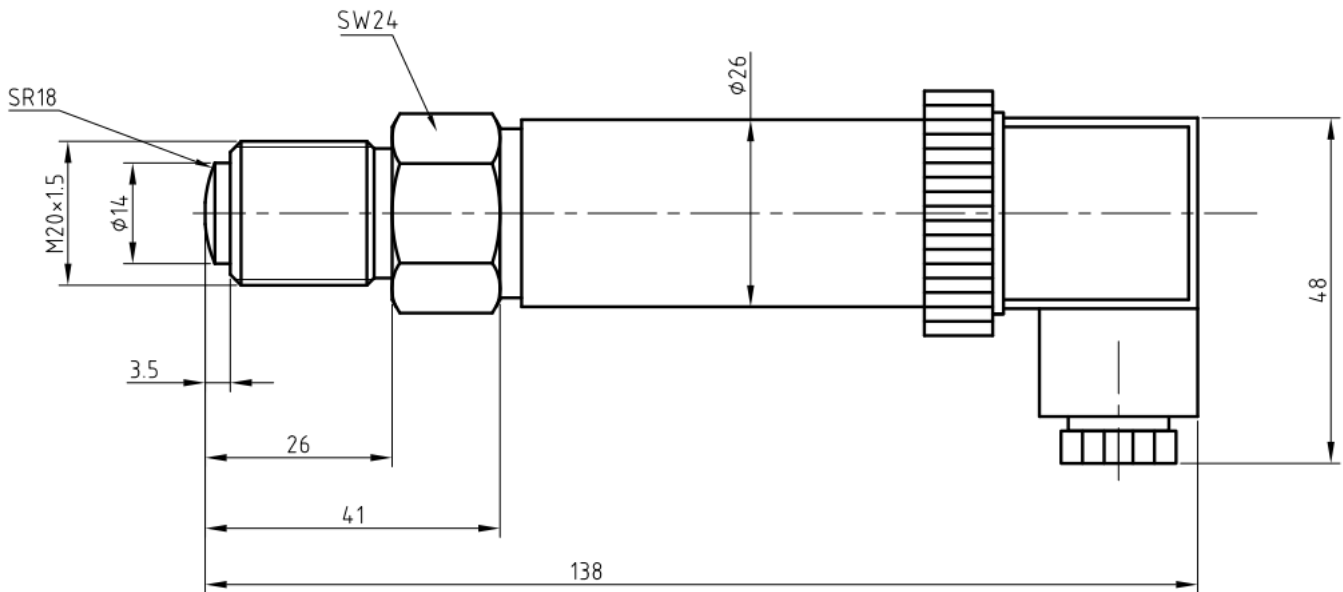
## Feature

- ◆ One Piece Stainless Steel Construction
- ◆ medium to high volumes from 6bar to 6000bar
- ◆ Better than 0.5% combined error
- ◆ mV or Amplified or Voltage Outputs
- ◆ Wide Operating Temperature Range

## Specification

Range:	0~1000bar ~6000bar
Accuracy:	0.5%FS
Nonlinearity:	Full range x 0.2%
Reliability:	Full range x 0.05%
Output:	4-20mA,0-10V, 0-5V, 1-5V, 0.5-4.5V (PT124B-211) ; 1.5mV/V , 2mV/V (PT124G-211)
Input voltage:	24VDC ( 4-20mA,0-10V, 0-5V output ) 5 V DC ( 0.5-4.5V output ) 10V DC ( 1.5mV/V , 2mV/V output )
Operating temperature:	-20~80℃
Compensated temperature:	0~75℃
Overload pressure:	150%FS
Burst pressure	300%FS
Wetted Parts:	stainless steel
Electric connector:	Hirschman ( DIN ) , M12,4pin, 5pin connector, grand cable and optional
Process connector:	G1/2, 1/2NPT, M20*1.5 (Customer design)
Housing Shell Diameter:	∅ 22mm, ∅ 23mm , ∅ 26mm , ∅ 38mm optional

**Dimension**



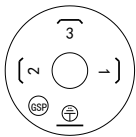
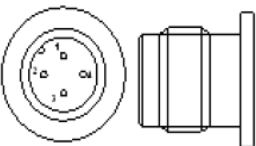
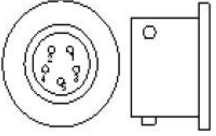
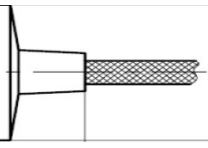
**Remark:**

The standard accuracy is 0.5%, and size diameter is 26mm ,if you need special (φ 22mm, φ 23mm , φ 26mm, φ 38mm),when order ,please mention it , and we will send you the drawing to confirm .

**Ordering Guide** with \* are required, with --- is optional

Model	Range (bar)	Output	Screw Thread	Electric connection	Accuracy	Diameter (mm)	Other requirement
PT124B-211	*	*	*	*	*	*	---
Example: PT124B-210-6000Bar-4/20mA-M20*1.5-Hirschmann-0.5%-26							

## Electric Connection & wiring code

Electric connector	2 wire (4-20mA)			3 wire (0-10V, 0-5V, 1-5V, 0.5-4.5V)			5 wire (1.5mV/V, 2mV/V)		
<b>Hirschman (DIN)</b>  Suitable $\phi$ 22, $\phi$ 26, $\phi$ 38	<b>Pin</b>	<b>Function</b>	<b>Color</b>	<b>Pin</b>	<b>Function</b>	<b>Color</b>	<b>Pin</b>	<b>Function</b>	<b>Color</b>
	1	E+	Red	1	E+	Red	1	---	---
	2	S+	Black	2	S+	Blue	2	---	---
	3	---	---	3	E-/S-	Black	3	---	---
<b>M12,4Pins</b>  Suitable $\phi$ 22, $\phi$ 26, $\phi$ 38	<b>Pin</b>	<b>Function</b>	<b>Color</b>	<b>Pin</b>	<b>Function</b>	<b>Color</b>	<b>Pin</b>	<b>Function</b>	<b>Color</b>
	1	E+	Brown	1	E+	Brown	1	---	---
	2	---	---	2	---	---	2	---	---
	3	S+	Blue	3	S+	Blue	3	---	---
<b>5 Pins</b>  Suitable $\phi$ 22, $\phi$ 26, $\phi$ 38	<b>Pin</b>	<b>Function</b>	<b>Color</b>	<b>Pin</b>	<b>Function</b>	<b>Color</b>	<b>Pin</b>	<b>Function</b>	<b>Color</b>
	1	E+	Red	1	S+	Blue	1	S+	Blue
	2	S+	Black	2	E+	Red	2	E+	Red
	3	---	---	3	E-/S-	Black	3	S-	White
	4	---	---	4	---	---	4	E-	Yellow
<b>Gland Cable</b> Suitable $\phi$ 22, $\phi$ 26, $\phi$ 38	<b>Function</b>	<b>Color</b>	<b>Function</b>	<b>Color</b>	<b>Function</b>	<b>Color</b>			
	E+	Red	S+	Blue	S+	Blue			
	S+	Black	E+	Red	E+	Red			
	---	---	E-/S-	White	S-	White			
	---	---	---	---	E-	Yellow			
	---	---	---	---	C	Black			
<b>Direct cable</b>  Suitable $\phi$ 23	<b>Function</b>	<b>Color</b>	<b>Function</b>	<b>Color</b>	<b>Function</b>	<b>Color</b>			
	E+	Red	S+	Blue	S+	Blue			
	S+	Black	E+	Red	E+	Red			
	---	---	E-/S-	Yellow/White	S-	White			
	---	---	---	---	E-	Yellow			
	---	---	---	---	C	Black			

Shanghai Zhaohui Pressure Apparatus Co., Ltd

5-6F No.8 Building No.115 ,Lane 1276 Nanle Road Songjiang District Shanghai 201600 China

Tel:+86-21-51691919 67755189 Fax:+86-21-67755185

E-mail: info@zhyqsensor.com

[www.zhyqsensor.com](http://www.zhyqsensor.com)

